

What is this document about?

This document describes how you can include the installation of Ghostscript, the schubec PS Printer and the schubec PS2PDF plug-in into your own installer (which you could use to distribute your FileMaker runtime solution). There are many ways to install these components, this is only a proposition.

Supported operating systems

- Windows 2003 Server
- Windows XP
- Windows 2000

Technical note: The schubec Installer only supports the operating systems mentioned.

Supported FileMaker versions

- FileMaker 5 to 8

Technical note: The schubec PS2PDF plug-in only supports the FileMaker versions mentioned.

Supported schubec PS2PDF plug-in versions

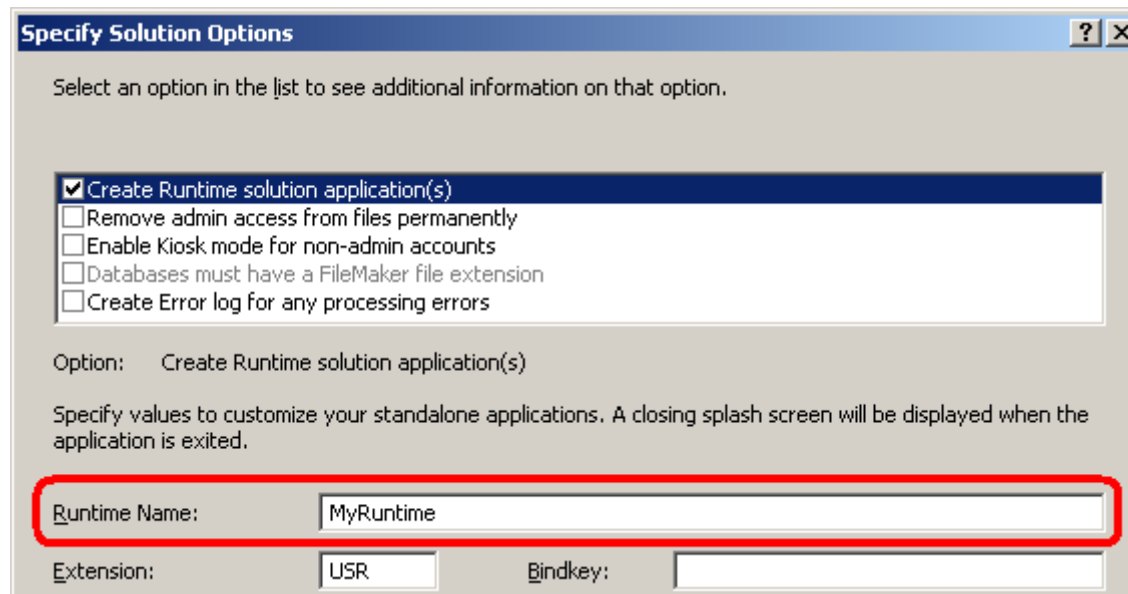
- schubec PS2PDF plug-in version 2.2.0 or higher
- schubec Installer version 3.0 or higher

Ghostscript versions

This documentation describes how GPL Ghostscript 8.15 or higher is installed. For installation of AFPL Ghostscript please refer to the AFPL Ghostscript manual.

Important aspects when creating runtime solutions

If you create a FileMaker runtime solution, you have to specify a "Runtime Name". Please think about the name carefully because **you must not change the name of the resulting runtime file** later otherwise the plug-in will not work.



Specify Solution Options

Select an option in the list to see additional information on that option.

- Create Runtime solution application(s)
- Remove admin access from files permanently
- Enable Kiosk mode for non-admin accounts
- Databases must have a FileMaker file extension
- Create Error log for any processing errors

Option: Create Runtime solution application(s)

Specify values to customize your standalone applications. A closing splash screen will be displayed when the application is exited.

Runtime Name: MyRuntime

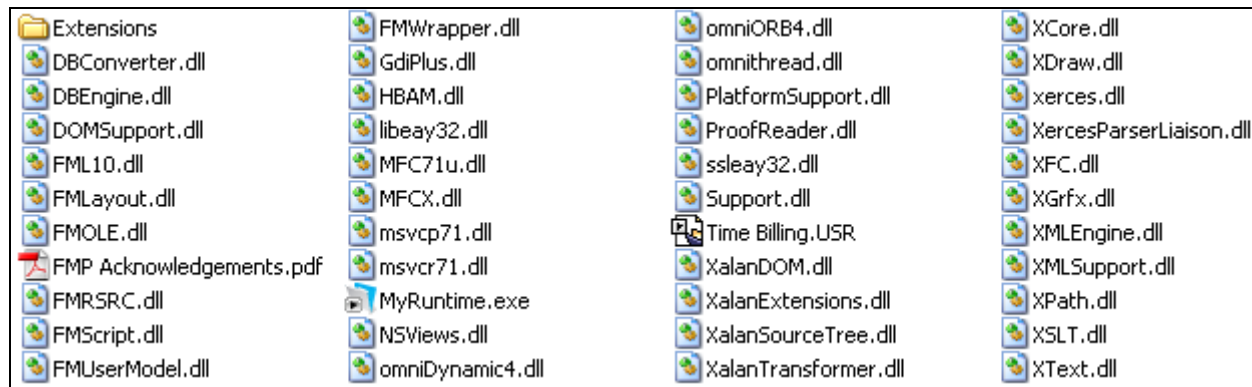
Extension: USR Bindkey:

Technical note: What is the reason for that?

FileMaker stores the printer information in a registry key with your solution's internal name. If you rename the file, the internal name for the registry key and the file name don't match any more which is important for the plug-in to retrieve the correct registry value.

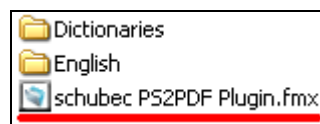
Installation of the schubec PS2PDF plug-in

After you created your runtime solution, you will find all files in a folder like this:



We suggest copying the plug-in file into the runtime solution's "Extensions" folder. The plug-in should not be installed with the "schubec Installer" since the "schubec Installer" searches for FileMaker installations and not for FileMaker runtime solutions. This means, the installer won't find your runtime solution and the user would have to select it manually. This could be very confusing for your users. Use the installer only to install the schubec PS Printer.

For that reason, open the "Extensions" folder and copy the "schubec PS2PDF Plugin" into this folder.



Installation of the "schubec PS Printer" with the "schubec Installer"

If you download the "schubec PS2PDF plug-in", the installer is configured to install all components of the plug-in for FileMaker. You have to re-configure it to install the printer for your runtime solution.

Edit the "schubec Installer.ini" file with your favorite text editor. The original "schubec Installer.ini" file, distributed with version 2.2.0 is listed here (without inline comments).

```
[main]
name= PS2PDF Plugin
licensefile= license.txt
weblink= www.schubec.com/?fmplugins
nodialog= no
nobackground= no
[printer]
install= yes
forcereinstall= yes
printerdriver= Apple Color LW 12/660 PS
printername=schubec PS Printer
[ghostscript]
install= yes
name= GNU Ghostscript
forcereinstall= no
originalSetup= yes
filename= ../../GPL_Ghostscript/gs815w32.exe
noDialog= no
version= 8.15
weblink= http://prdownloads.sourceforge.net/ghostscript/gs815w32.exe?download
noDialog= no
[plugin]
install= yes
name= schubec PS2PDF Plugin
filename= schubec PS2PDF Plugin.fmx
version= 2.2.0
noDialog=no
forceinstall=yes
[system]
install= no
[systemfiles]
[misc]
developer= no
#Choose
#Software\\schubec\\SCPS for the schubec PS2PDF Plugin
#registryPath= Software\\schubec\\SCPS
```

Change the [main] section to

```
[main]
name= PS2PDF Plugin
licensefile= license.txt
weblink= www.schubec.com/?fmplugins
nodialog= yes
nobackground= yes
```

This will hide the background and the dialog.

Don't change the [printer] section.

```
[printer]
install= yes
forcereinstall= yes
printerdriver= Apple Color LW 12/660 PS
printername=schubec PS Printer
```

If you want to install Ghostscript with your own installer (recommended), change the [ghostscript] section to

```
[ghostscript]
install= no
```

Since you install the plug-in by copying the plug-in file into your solution's "Extensions" folder, you don't have to install it with the "schubec Installer". Change the [plug-in] section to

```
[plugin]
install= no
```

Don't change the [system] nor the [systemfiles] section.

```
[system]
install= no
[systemfiles]
```

Change the [misc] section to

```
[misc]
developer= yes
registryPath= Software\\schubec\\SCPS
```

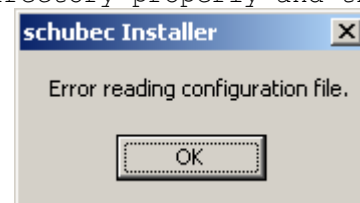
The whole INI file listing:

```
[main]
name= PS2PDF Plugin
licensefile= license.txt
weblink= www.schubec.com/?fmplugins
nodialog= yes
nobackground= yes
[printer]
install= yes
forcereinstall= yes
printerdriver= Apple Color LW 12/660 PS
prntername=schubec PS Printer
[ghostscript]
install= no
[plugin]
install= no
[system]
install= no
[systemfiles]
[misc]
developer= yes
registryPath= Software\\schubec\\SCPS
```

If you execute the "schubec Installer" now, the "schubec PS2PDF Printer" is (re)installed silently. If an error occurs, Windows displays an appropriate message. If it succeeds, there is no message.

You have to execute the "schubec Installer" with your installer. Please make sure that you include both - the "schubec Installer.exe" and the "schubec Installer.ini" – into your installer.

Technical note: The schubec Installer.exe looks for the "schubec Installer.ini" file **in the current working directory**. Some installers don't set the current working directory properly and the following message appears:



For that reason, the "schubec Installer" does accept a parameter to the "schubec Installer.ini" file. If you execute the "schubec Installer" like that

```
"C:\MyTest\schubec Installer.exe" C:\Another Directory\schubec Installer.ini
```

the installer looks for the INI file in the path "C:\Another Directory\schubec Installer.ini". (Please notice, that **the path to the INI file is not enclosed in quotes** although it contains white spaces.)

Installation of Ghostscript

As mentioned before, there are many ways to install Ghostscript. We describe one possibility – the easiest way - here.

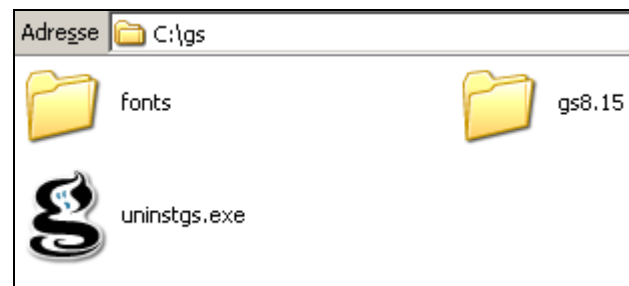
On your developer's machine, execute the Ghostscript setup (to extract the all Ghostscript files which are stored into this single installer file)



and install Ghostscript through the Ghostscript setup at

C:\gs

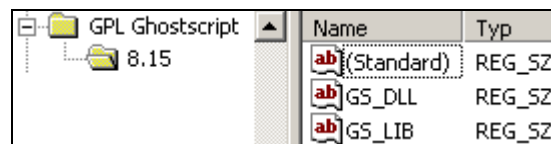
You will find the following files/directories there



You can also find a registry key in

HKEY_LOCAL_MACHINE\SOFTWARE\GPL Ghostscript\8.15

With two values "GS_DLL" and "GS_LIB" pointing to the appropriate files you installed just before.



On your user's machine, you just have to copy "gs8.15" and "fonts" folder somewhere on the hard disk (we suggest the user's "Program Files" directory) and create these two registry values, **pointing to the correct location**.

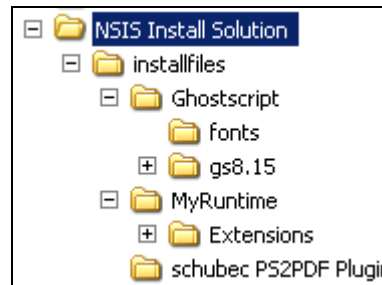
You now have the technical background to install all components for the schubec PS2PDF Plug-in.

Working example in Nullsoft Scriptable Install System (NSIS).

NSIS is an open source, available for free at http://nsis.sourceforge.net/Main_Page

You have to download an install NSIS to use this example.

Copy all components you need - schubec Installer, Ghostscript and your runtime solution (with the plug-in in the Extensions folder) – into a folder called "installfiles".



Create a file called "myinstallation.nsi" in the installfiles parent directory (called "NSIS Install Solution" in the screenshot above) and edit it with your favorite text editor. It should contain

```
SetCompressor /SOLID /FINAL bzip2
Name "Ghostscript Installation"

SetDatablockOptimize on
CRCCheck On
Outfile "Runtime Installer.exe"
InstallDir "$PROGRAMFILES\MyRuntime"

Page directory
Page instfiles

Section "instfiles"

;This copies the Ghostscript files into the users program-files folder.
SetOutPath "$PROGRAMFILES\Ghostscript\gs8.15"
File /r "installfiles\Ghostscript\gs8.15\*.*"
```

```
;This copies the Ghostscript fonts into the users program-files folder.
SetOutPath "$PROGRAMFILES\Ghostscript\fonts"
File /r "installfiles\Ghostscript\fonts\*.*"

;This creates the necessary registry keys.
WriteRegStr HKLM "SOFTWARE\GPL Ghostscript\8.15" "GS_DLL" "$PROGRAMFILES\Ghostscript\gs8.15\bin\gsdll32.dll"
WriteRegStr HKLM "SOFTWARE\GPL Ghostscript\8.15" "GS_LIB"
"$PROGRAMFILES\Ghostscript\gs8.15\lib;$PROGRAMFILES\Ghostscript\fonts;$PROGRAMFILES\Ghostscript\gs8.15\Resource"
;Done. Ghostscript is installed. It is only coping some files and creating two registry values.

;Installation of the schubec PS Printer
;We copy some temporary files to the TEMP folder
SetOutPath "$TEMP\schubecPrinterInstaller\"
File "installfiles\schubec PS2PDF Plugin\schubec Installer.exe"
File "installfiles\schubec PS2PDF Plugin\schubec Installer.ini"

;Now we execute the installer to install the schubec PS Printer
ExecWait '"$TEMP\schubecPrinterInstaller\schubec Installer.exe" $TEMP\schubecPrinterInstaller\schubec Installer.ini'

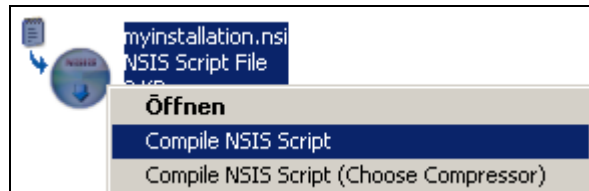
;Now delete the temporary files.
Delete "$TEMP\schubecPrinterInstaller\*.*"
Rmdir /r "$TEMP\schubecPrinterInstaller"


;Now, install the runtime solution
SetOutPath "$INSTDIR"
File /r "installfiles\MyRuntime\*.*"

SectionEnd
```

This example contains inline comments for installation about Ghoscript, the "schubec PS Printer" and your runtime solution. For the NSIS commands and options please have a look at <http://nsis.sourceforge.net/Docs/Chapter4.html>
NSIS is extreme powerful and has many, many options. (For example you can create start menu entries, un-installers, display license texts, check Windows versions and so on...)

You can now compile this NSIS script by right clicking on it and choosing "Compile NSIS Script"



A single setup file with the name  is the result. Theoretically, this file is now ready for redistribution. Practically, you would include start menu entries to execute your runtime solution, an un-installer, display a license text your user has to accept and so on...

This example can be adopted for other install systems.

Summary

- Copy the "schubec PS2PDF plug-in" into your runtime solution's "Extensions" folder.
- Install Ghoscript by copying the "gs8.15" and "fonts" folder to your users hard disk and create two appropriate registry keys.
- Install the "schubec PS Printer" by adopting the "schubec Installer.ini" file and executing the "schubec Installer". If your installer does not set the correct working directory specify the path to the INI file as a parameter to the "schubec installer".

Contact

schubec
Bernhard Schulz EDV Consulting
Dreifaltigkeitsgasse 18
5020 Salzburg
Austria / EUROPE

Tel: +43 664 1434549
Fax: +43 1 81749554433
<http://www.schubec.com>
info@schubec.com

No warranty

BECAUSE THE INFORMATION IS PUBLISHED FREE OF CHARGE, THERE IS NO WARRANTY FOR THE INFORMATION OR ANY INSTALLERS YOU CREATE AND DISTRIBUTE BASED ON THIS INFORMATION, TO THE EXTENT PERMITTED BY APPLICABLE LAW. THE ENTIRE RISK AS TO THE QUALITY AND PERFORMANCE OF THE INFORMATION AND INSTALLERS DERIVED FROM THIS INFORMATION IS WITH YOU. SHOULD THE INFORMATION PROVE DEFECTIVE, YOU ASSUME THE COST OF ALL NECESSARY SERVICING, REPAIR OR CORRECTION.